



Liverpool College PRIMARY NEWSLETTER



Friday 23rd January 2026

Reception Superheroes



Over the last few weeks, the children in Reception have been learning about superheroes! Our story in literacy is called Juniper Jupiter and is about a little girl superhero and her side-kick, a dog called Nut! We have also learnt about real life superheroes such as firefighters, dentists, police and doctors. As part of our theme, the children dressed up on Friday for Superhero day. They had a wonderful day and it was amazing to see all of the different superhero and real life superhero costumes!

INSTRUMENTAL SHOWCASE 2 - WEDNESDAY 21ST JANUARY

On Wednesday evening the MV Hall was filled with the Sound of Music, as our Primary Phase gave another wonderful concert for friends and families! The Instrumental Showcase is an opportunity for our children to share what they have been learning in lessons and to perform for an audience.

Mr Jones has made rockstars out of our Ch 2 and 4 guitarists with performances from 'The Sweet Girls', 'The Kool Band' and 'The Vibe Sharks', featuring the wonderfully talented Noah HR (Ch 6) and Elsie F (Ch 4).

Our soloists prepared a wide array of music and featured first performances from Esme W (Ch 5), Elsie B (Ch 4), our very own Ariel - Florence W (Ch5), Lacey Mc (Ch 4), Sofia M (Ch 3) and Odinas S (Ch 3) as well as many returning performers who already have the bug! It is so inspiring to see the bravery and nervous faces change into beaming smiles when the audience applause comes!

A huge **congratulations** to all our performers - this concert is always a highlight and this one did not disappoint!

In case you missed it here are some highlights!

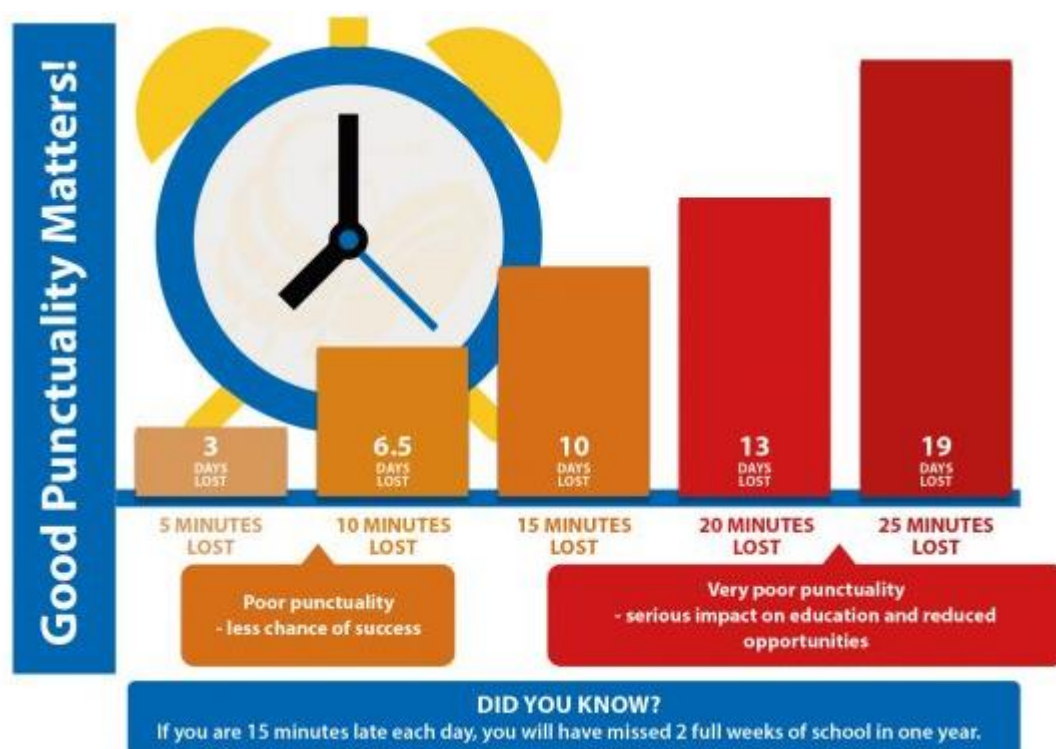


In School, On Time, Everyday!

Regularly arriving late to school is unsettling for your child and can have a negative impact on their engagement in school life.

Arriving late means they often miss important information, including the plan for the day or the beginning of their first lesson. Therefore, they may miss key learning that hinders them to follow the rest of the lesson, affecting comprehension and retention of key information.

Pupils **can come into school from 8:15am** and the **school day starts promptly at 8:25am**. If a child arrives at school after 8:25am without prior arrangements having been agreed, they will be deemed late. **The school gates closes at 8:35am** and registers close at 8:30am. Arrival at school after this time, without prior approval, will be recorded as late. If your child arrives very late, this may be recorded as an unauthorised absence for the whole morning.



We appreciate your continued support in getting your children into school everyday and on time.



Headteacher's Award

Well done to the following pupils who were given Headteacher's Award certificates this week.

Muhammad K, Alba L, Rory B, Zara F, Alessia T, Nina W, Axel S, Alencia S, Charlotte G, Luis-Jax C, Fatima M, Kylo D, Rosa C, Mohamed A, Nova P, Jack W, Ayaan N, Jnr C-W, Jude D-V, Zoya A, Paddy T, Inaya A, Nathan L-Q, Ethan P, Felix C, Ethan E, Joseph G-Mc, Amelia L, Bodhi B, Omari M, Liyana R, Luca B, Lily K, Sunny O, Safa K, Aviana S, Khasha B, Zahraa A, Artie H, Sienna M, Leah D, Grace W

Attendance for week commencing 19TH January 2026

Reception	97.4 % 😊
Year 1	96.9 %
Year 2	96.8 %
Year 3	94.6 %
Year 4	98.3 % 😊
Year 5	95.8 %
Year 6	95.3 %

Well done to Reception and Year 4 with good attendance

Notice to All Parents/Carers



In support of Mental Health Support Team

Alder Hey Children's Hospital.
All parents/carers are warmly invited.

Time 8.45am

Friday 30th January 2026

Spring Term Dates

Date	Event/ activity
28/1/26	Y4Q Class Assembly 8.30am
4/2/26	Y4R Class Assembly 8.30am
11/2/26	Parents' book look
16/02/26-20/02/26	HALF TERM
23/02/26-25/02/26	York residential (Y5) Robinwood residential (Y4)
02/03/26	Parent teacher evening
04/03/26	Parent teacher evening
04/03/26	Year 3P Class Assembly
06.03.26	Year 1Q Class Assembly 1.45pm
13/03/26	Y1R Class Assembly 1.45pm
18/3/26	Y3Q Class Assembly 8.30am
20/03/26	Y1P Class Assembly 1.45pm
20/3/26	Primary play rehearsal
23/3/26	Primary Play week
25/3/26	Y3R Class Assembly 8.30am
27/3/26	End of term
29/3/26-5/4/26	Ski Trip



Final preparations are under way for our upper school musical 'Oliver!' Performances take place on Wednesday 4th,

Thursday 5th, Friday 6th at 6.30pm and a Saturday matinee at 1pm on 7th February. All performances will take place in the Mv hall.

Lionel Bart's *Oliver!* is a lively and heart-warming musical based on Charles Dickens' classic novel *Oliver Twist*. Follow young orphan Oliver as he escapes the workhouse and finds himself in the bustling streets of Victorian London, meeting an unforgettable cast of characters along the way. Filled with catchy songs, humour, and moments of real emotion, *Oliver!* is a joyful story of hope, friendship, and finding where you belong. Starring a special four legged guest!

<https://www.trybooking.com/uk/events/landing/103035>

Best wishes Mrs Harper



Children explore teamwork and creativity as they design and build dens using loose parts, fabrics, and natural materials within Opal Play. Den building in Opal Play encourages imagination, problem-solving, and collaboration as children transform open-ended resources into their own special spaces.

This week, the children have really enjoyed making dens. They have found this especially fun whilst it was raining slightly and the floor and materials were getting muddy.

Please encourage your children to bring in and to wear their wellies and school coat so that they can have lots of fun outside without their school shoes getting muddy/wet.

Next week Friday 30th January we are having a **DEN** building competition at lunch time if parents/carers have any crates, tarpaulin, materials or any other items suitable for making **DENS** outside please bring them into school



Well done to
Alexander 5Q
who took part in

Liverpool Penguin's Swimming Club
Championships last Saturday, winning the
freestyle and breaststroke events for the
9 year old age classification.



January Gym Offer

January Offer Campaign for general public
- £120 for Full Years Gym Membership -
Opening Times to visit the gym please see
below

Opening times to sign up - Mon, Tues,
Weds, Thurs 4:30pm - 10pm —
Friday 4pm - 8pm —
Weekends 9am - 5pm

SEN Coffee Morning Invitation

We warmly invite parents and carers to
join us for a SEN Coffee Morning on
Friday
30th January between 9:45 to 11:15am.

This informal session is a chance to meet
the SEN team, ask questions, share
experiences, and connect with other
families in a relaxed and supportive
environment.

We will also be joined by a member of the
ASD training team who will be happy
to answer your questions.

The coffee morning will take place in the
secondary school - please head to the main
reception and you will be directed from
there.

We would love to see you there — if you
are interested in attending, please can you
complete the short form (just to give us an
idea of numbers for refreshment
purposes)

If you have any questions, please contact
SEND

admin sendadmin@liverpoolcollege.org.uk

[SEN coffee morning - Fill in form](#)

BUGSY MALONE REHEARSALS

TUESDAY 27TH JANUARY - 3PM - 4PM

STH

Fat Sam's Grand Slam

- All main cast in this song
 - **All Ch 5 - 8 chorus.**

THURSDAY 29TH JANUARY - 3.15 - 5.15PM

MV HALL

So you wanna be a Boxer

- Leroy
- Cagey Joe
- **ALL CH 5 - 8 CHORUS**

ADVANCED NOTICE BUGSY MALONE SHOW WEEK SCHEDULE.

To help with calendars and planning please find below an outline of who is needed when in show week of Buggy Malone.

Dates for your Diary:

- **Wednesday 4th March – Tickets go on sale**
- **Friday 13th March – Costume deadline** (please hand all costumes to Mrs Herron, named and in a bag on a hanger)
 - **Friday 20th March – Rigging – CREW AND BAND ONLY**
 - **Saturday 21st March – MV HALL – 10 – 4pm- ALL MAIN CAST, BAND AND CREW**
 - **Sunday 22nd March – MV HALL – 10 – 4pm – ALL CAST, BAND AND CREW**
- **Monday 24th March – NORMAL SCHOOL HOURS** - Scene transitions, finale, bows and songs
 - **Tuesday 25th March – NORMAL SCHOOL HOURS** - First runs
 - **Wednesday 26th March – Dress rehearsals X2 for Primary**
- **Evening Performance – 7pm - TICKETS ON SALE FROM WEDNESDAY 5th MARCH**
 -
 - **Thursday 27th March – Matinee Performance – 1.30pm – 3.30pm**
TICKETS ON SALE FROM WEDNESDAY 5th MARCH
 -
 - **Thursday 27th March - Evening Performance – 7pm**
TICKETS ON SALE FROM WEDNESDAY 5th MARCH

Liverpool City Council ASD Training Team

ASD Course

Targeted 8-11 Years

Date: 27th, 28th, 29th January

Time: 9.30am till 12pm

Venue: Virtual Zoom sessions.

Dear Parent/Carer,

We would like to offer you the opportunity to attend a course on Autistic Spectrum Disorder (Your child must have an ASD diagnosis) The course will allow you to build your knowledge on autism and meet / share information with other parents.

(All three sessions need to be attended to complete the course).

If you wish to attend, please contact the team on the email below.

Email: asdtrainingteam@liverpool.gov.uk

If the above dates for the workshop are not suitable, please view the Liverpool Local offer Page / Liverpool ASD training team for future training and workshops.

[Liverpool ASD Training Team | Liverpool Family Information & SEND Directory](#)

We look forward to meeting you.

Yours sincerely

ASD Training Team

Liverpool City Council ASD Training Team

The Liverpool ASD Training Team are providing a series of virtual drop in advisory sessions via zoom. They are for parent/carers wishing to talk in a private one to one setting about any questions or concerns they may have about their child. You do not require a diagnosis of ASD to book your place.

Dates: February 2026

9th, 12th, 13th. 23rd

(PM sessions 1pm and 2pm)

11th, 24th, 25th, 26th, 27th

Times

9.30am
10.30am
11.30am
1pm
2pm

To book your place please email asdtrainingteam@liverpool.gov.uk

With a choice of your date and time and you will be emailed a zoom link.

For more information about our service please view the Liverpool Local offer Page / Liverpool ASD training team for future training and workshops.

[Liverpool ASD Training Team | Liverpool Family Information & SEND Directory](#)